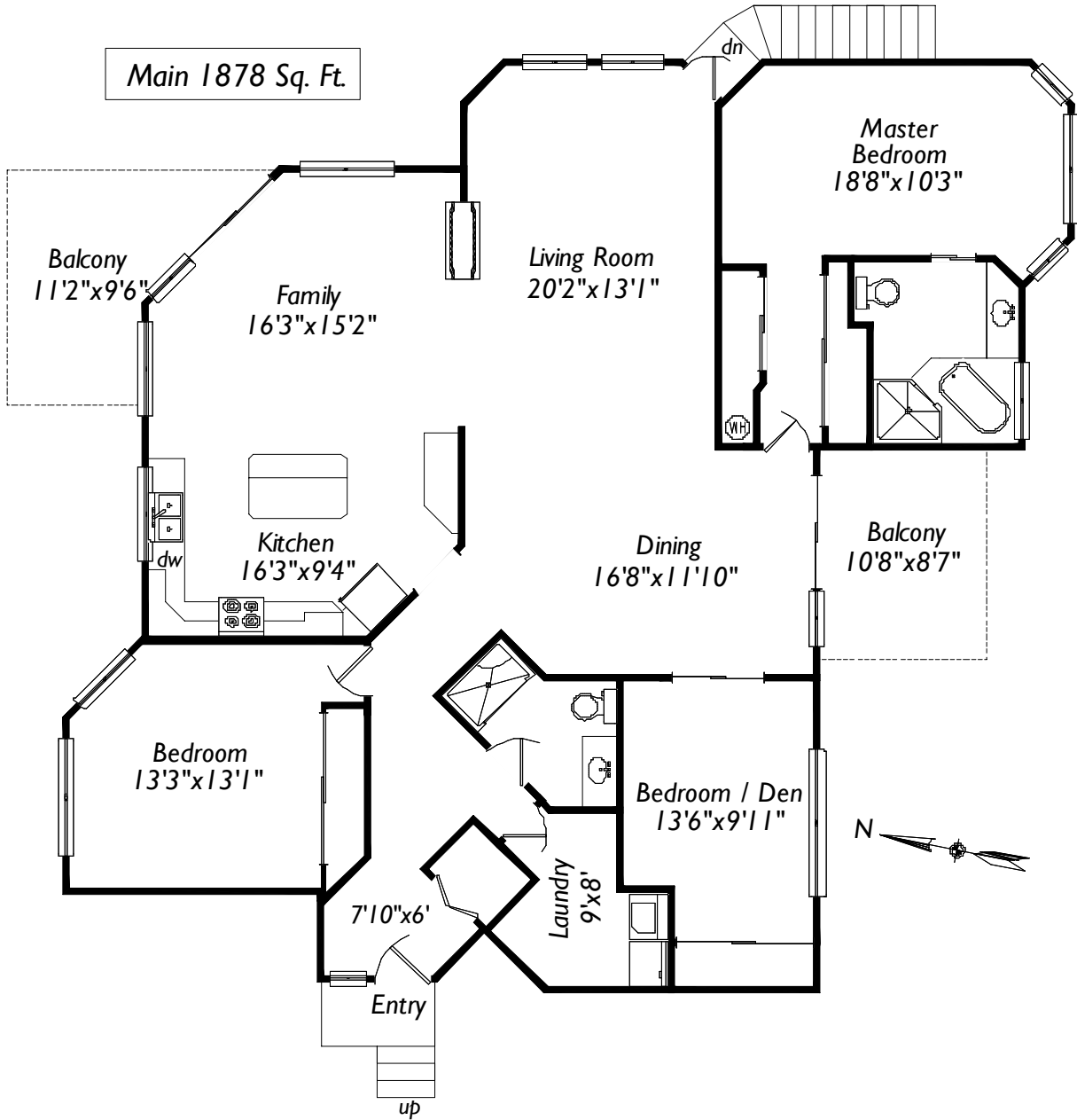


4 – 2525 Oakville Avenue Sidney, BC V8L 1V9



Square Footage calculated from Strata Plan

	Finished Sq. ft	Unfinished Sq. ft	Total Sq. ft
Main	1878	0	1878
Total	1878	0	1878
Balconies	0	211	211



Willy Dunford
Personal Real Estate Corporation



CHRISTIE'S
INTERNATIONAL REAL ESTATE

250-886-0612 Cel
250-655-4626 Office
Willy@willydunford.com

All information for illustration purpose only. Measurements and square footage are approximate. If precise dimensions are required purchaser to verify.