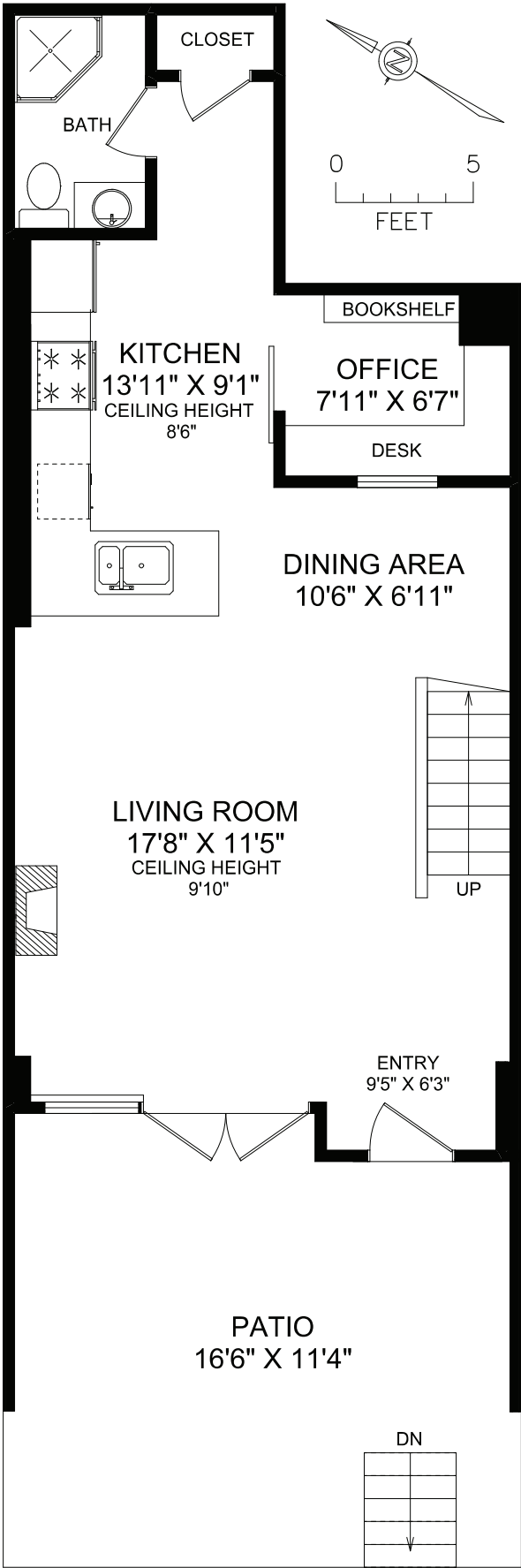


MAIN FLOOR



FLOOR	FINISHED	UNFINISHED	TOTAL
MAIN	686	0	686
UPPER	627	0	627
TOTAL	1313	0	1313

OTHER AREAS			
PATIO	298		
BALCONY	64		



114-21 ERIE STREET
DOCUMENT PREPARED FOR THE EXCLUSIVE USE OF
ALEX ROSE

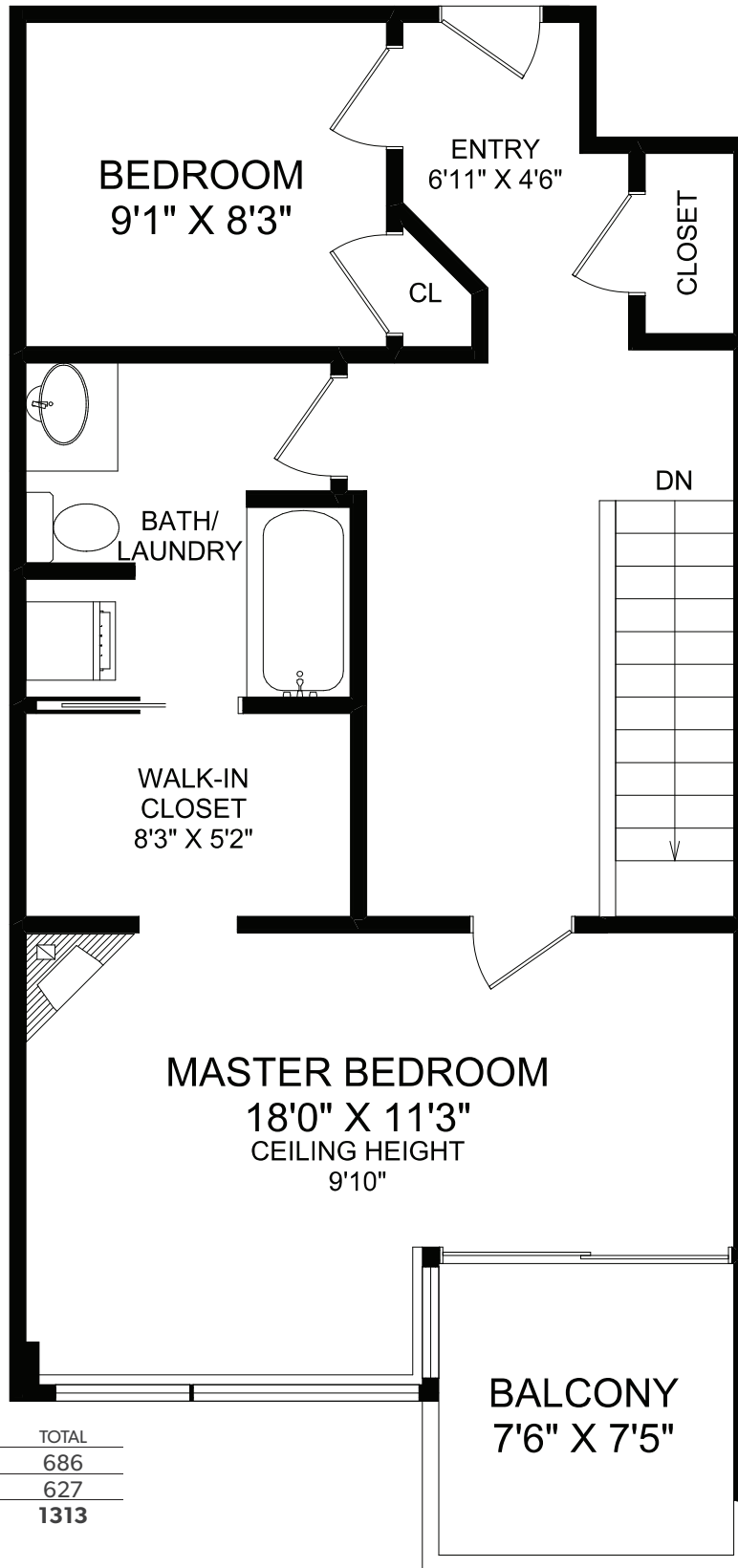
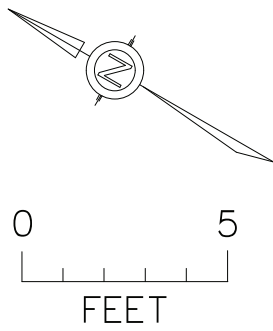
250-388-6998
ORDERS@REALFOTO.CA MEASURED 01/20/2016 BY AMANDA HOY

All information furnished regarding this property is from sources deemed reliable but no warranty or representation is made to the accuracy thereof. Purchaser to verify measurements if important.



RE/MAX
CAMOSUN
Each Office Independently Owned and Operated

UPPER FLOOR



FLOOR	FINISHED	UNFINISHED	TOTAL
MAIN	686	0	686
UPPER	627	0	627
TOTAL	1313	0	1313

OTHER AREAS		
PATIO	298	
BALCONY	64	



114-21 ERIE STREET

DOCUMENT PREPARED FOR THE EXCLUSIVE USE OF

ALEX ROSE

250-388-6998
ORDERS@REALFOTO.CA MEASURED 01/20/2016 BY AMANDA HOY

All information furnished regarding this property is from sources deemed reliable but no warranty or representation is made to the accuracy thereof. Purchaser to verify measurements if important.



RE/MAX

CAMOSUN
Each Office Independently Owned and Operated