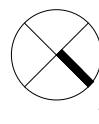
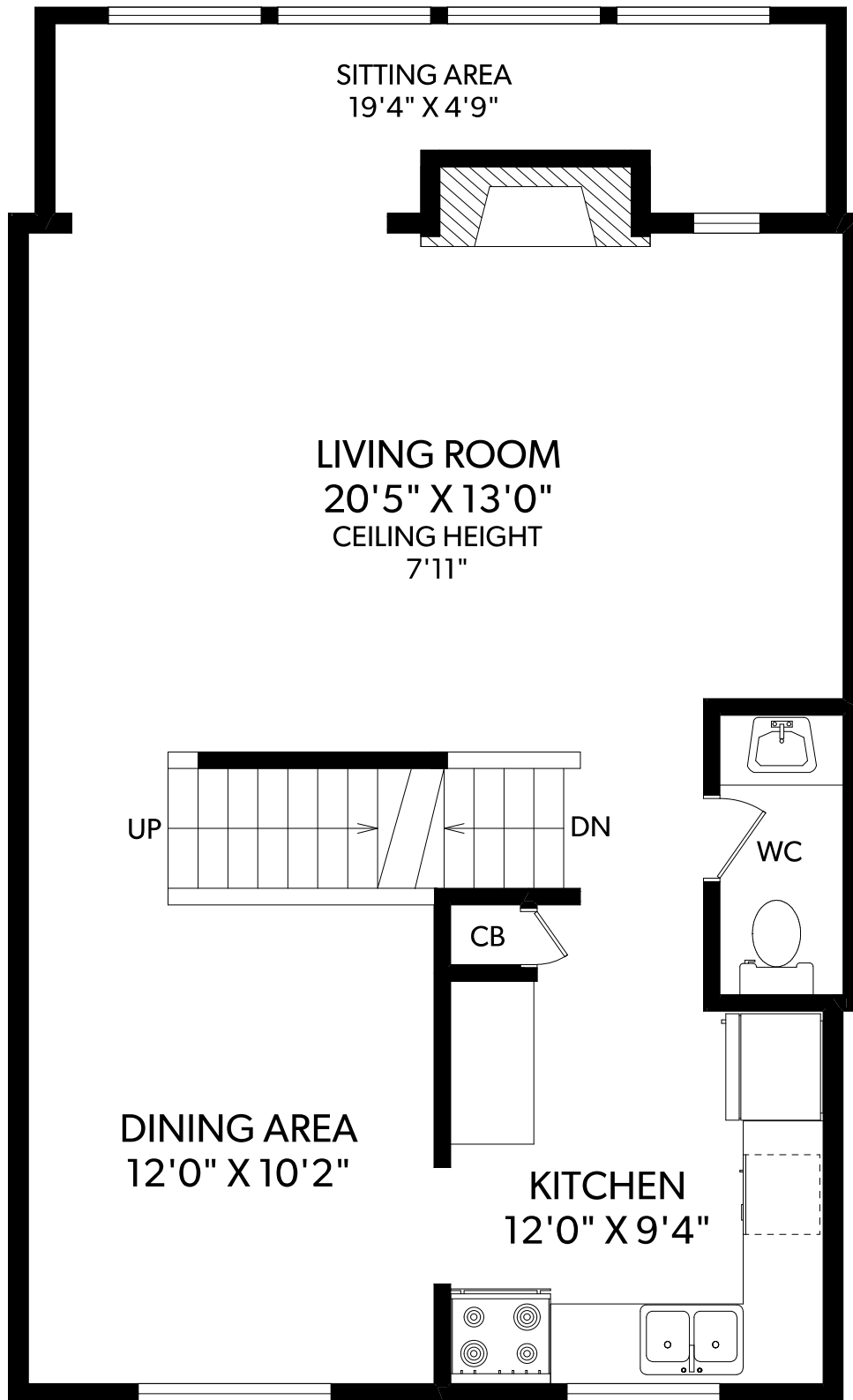


MAIN FLOOR



FLOOR	FINISHED	UNFINISHED	TOTAL
MAIN	739	0	739
UPPER	684	0	684
GROUND	340	0	340
TOTAL	1763	0	1763

OTHER AREAS	
GARAGE	291
PATIO	181



38-933 ADMIRALS ROAD

DOCUMENT PREPARED FOR THE EXCLUSIVE USE OF

HATTER* KING*

250-388-6998
ORDERS@REALFOTO.CA

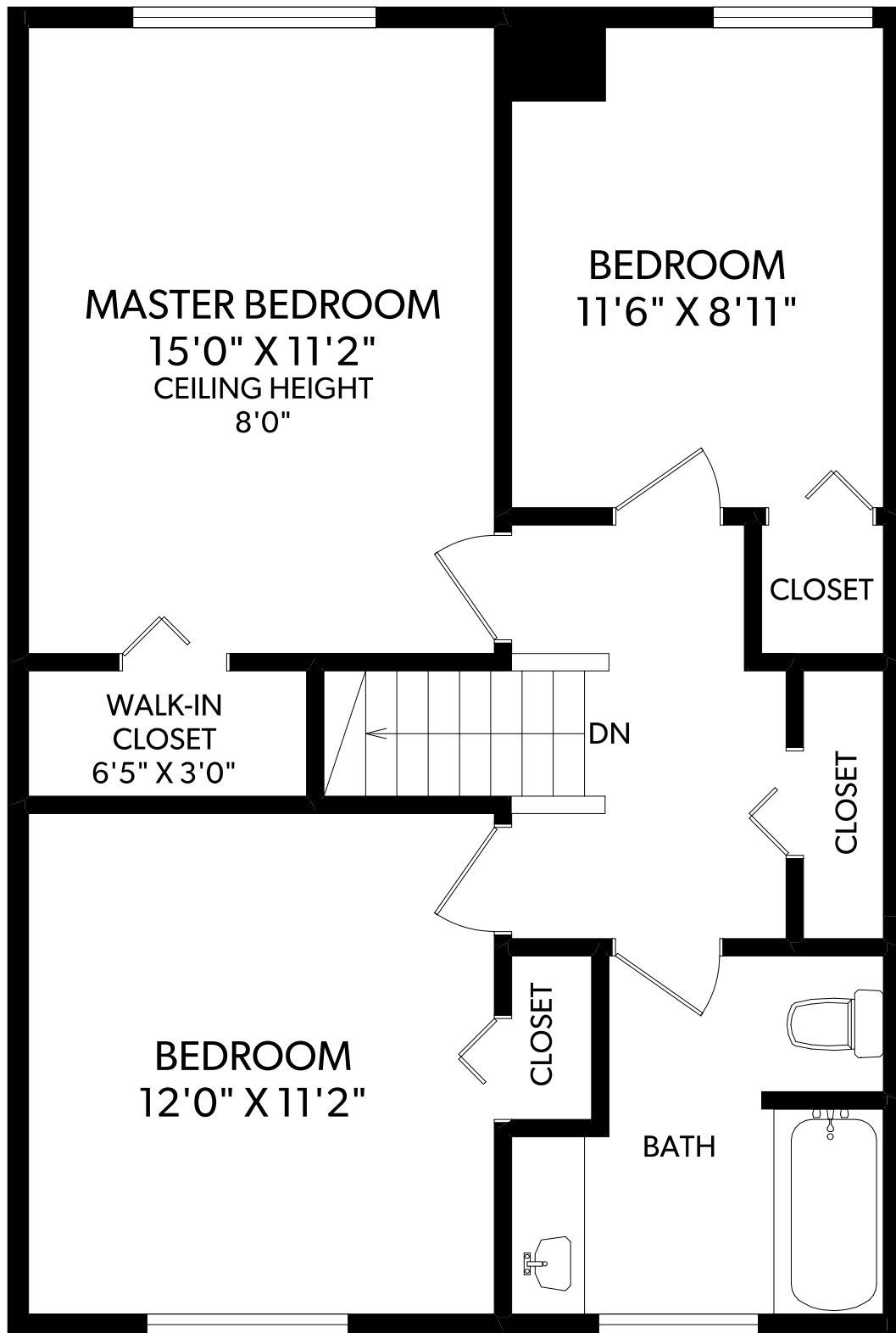
*PERSONAL REAL ESTATE CORPORATION
MEASURED 13/11/2020 BY IAN BERTRAM



RE/MAX
CAMOSUN
Each Office Independently Owned and Operated

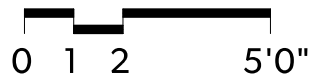
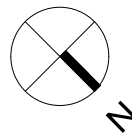
All information furnished regarding this property is from sources deemed reliable but no warranty or representation is made to the accuracy thereof. Purchaser to verify measurements if important.

UPPER FLOOR



FLOOR	FINISHED	UNFINISHED	TOTAL
MAIN	739	0	739
UPPER	684	0	684
GROUND	340	0	340
TOTAL	1763	0	1763

OTHER AREAS	
GARAGE	291
PATIO	181



250-388-6998
ORDERS@REALFOTO.CA

38-933 ADMIRALS ROAD
DOCUMENT PREPARED FOR THE EXCLUSIVE USE OF
HATTER* KING*

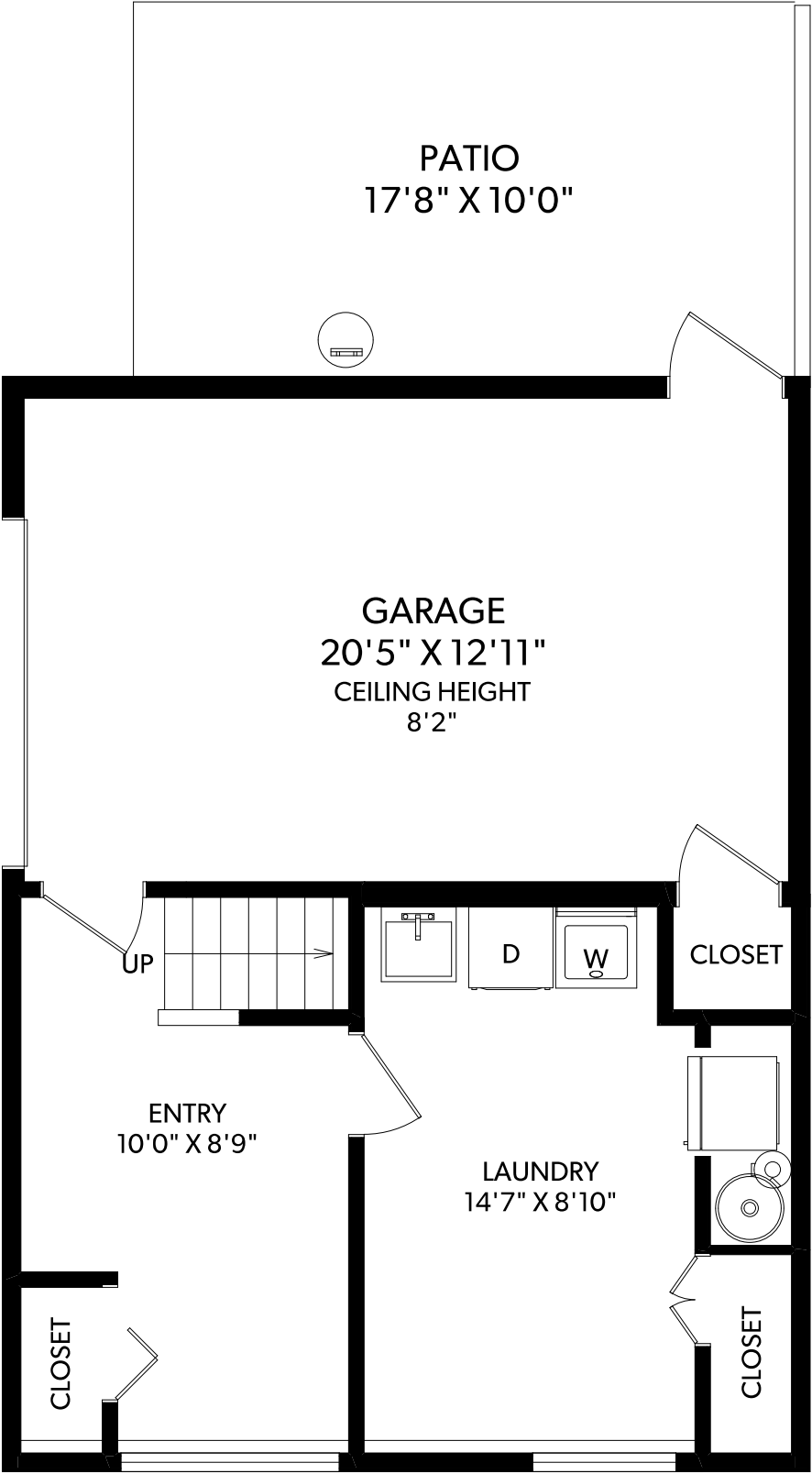
*PERSONAL REAL ESTATE CORPORATION
MEASURED 13/11/2020 BY IAN BERTRAM



RE/MAX
CAMOSUN
Each Office Independently Owned and Operated

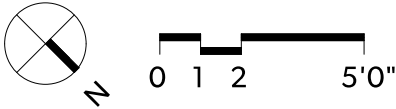
All information furnished regarding this property is from sources deemed reliable but no warranty or representation is made to the accuracy thereof. Purchaser to verify measurements if important.

GROUND FLOOR



FLOOR	FINISHED	UNFINISHED	TOTAL
MAIN	739	0	739
UPPER	684	0	684
GROUND	340	0	340
TOTAL	1763	0	1763

OTHER AREAS	
GARAGE	291
PATIO	181



250-388-6998
ORDERS@REALFOTO.CA

38-933 ADMIRALS ROAD
DOCUMENT PREPARED FOR THE EXCLUSIVE USE OF
HATTER* KING*

*PERSONAL REAL ESTATE CORPORATION
MEASURED 13/11/2020 BY IAN BERTRAM



RE/MAX
CAMOSUN
Each Office Independently Owned and Operated

All information furnished regarding this property is from sources deemed reliable but no warranty or representation is made to the accuracy thereof. Purchaser to verify measurements if important.