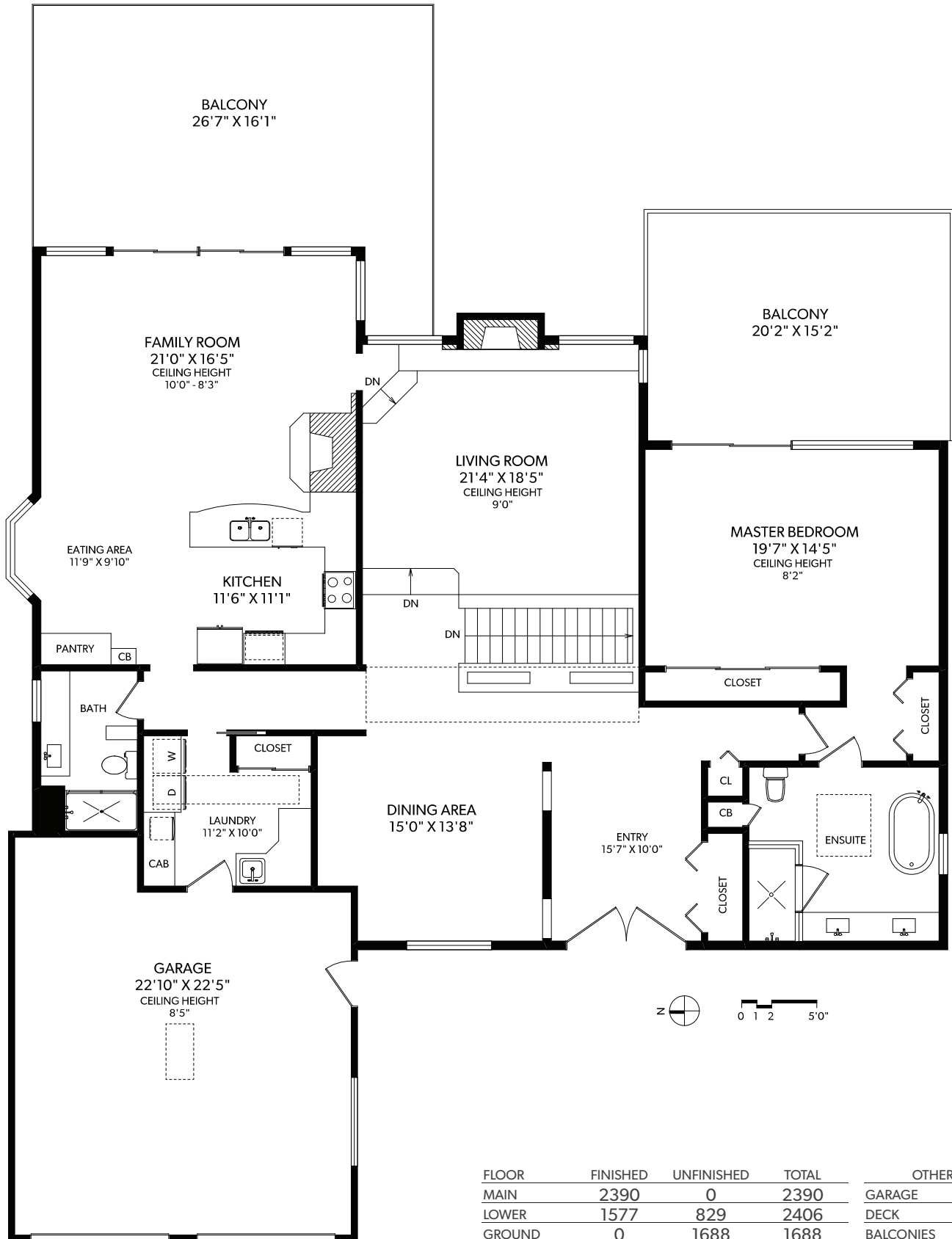


MAIN FLOOR



| FLOOR | FINISHED | UNFINISHED | TOTAL | OTHER AREAS | |
|--------|----------|------------|-------|-------------|-----|
| MAIN | 2390 | 0 | 2390 | GARAGE | 571 |
| LOWER | 1577 | 829 | 2406 | DECK | 824 |
| GROUND | 0 | 1688 | 1688 | BALCONIES | 776 |
| TOTAL | 3967 | 2517 | 6484 | PATIO | 261 |



5537 FOREST HILL ROAD

DOCUMENT PREPARED FOR THE EXCLUSIVE USE OF

BLAIR VEENSTRA*

250-388-6998
ORDERS@REALFOTO.CA

*PERSONAL REAL ESTATE CORPORATION
MEASURED 05/08/2020 BY CLAY OVINCE



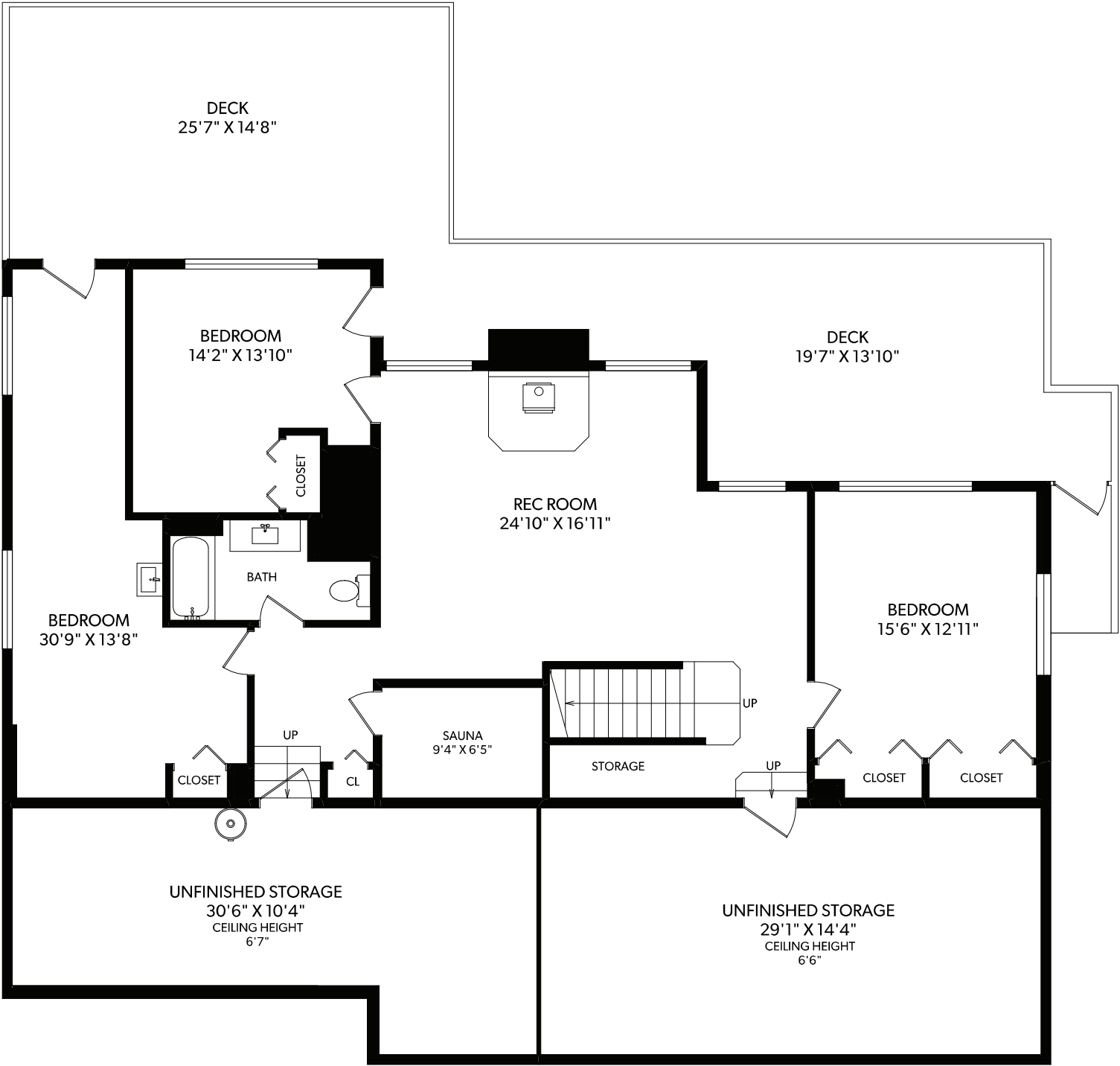
RE/MAX

CAMOSUN

Each Office Independently Owned and Operated

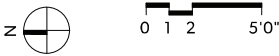
All information furnished regarding this property is from sources deemed reliable but no warranty or representation is made to the accuracy thereof. Purchaser to verify measurements if important.

LOWER FLOOR



| FLOOR | FINISHED | UNFINISHED | TOTAL |
|--------|----------|------------|-------|
| MAIN | 2390 | 0 | 2390 |
| LOWER | 1577 | 829 | 2406 |
| GROUND | 0 | 1688 | 1688 |
| TOTAL | 3967 | 2517 | 6484 |

| OTHER AREAS | |
|-------------|-----|
| GARAGE | 571 |
| DECK | 824 |
| BALCONIES | 776 |
| PATIO | 261 |



250-388-6998
ORDERS@REALFOTO.CA

5537 FOREST HILL ROAD
DOCUMENT PREPARED FOR THE EXCLUSIVE USE OF
BLAIR VEENSTRA*

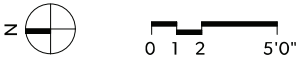
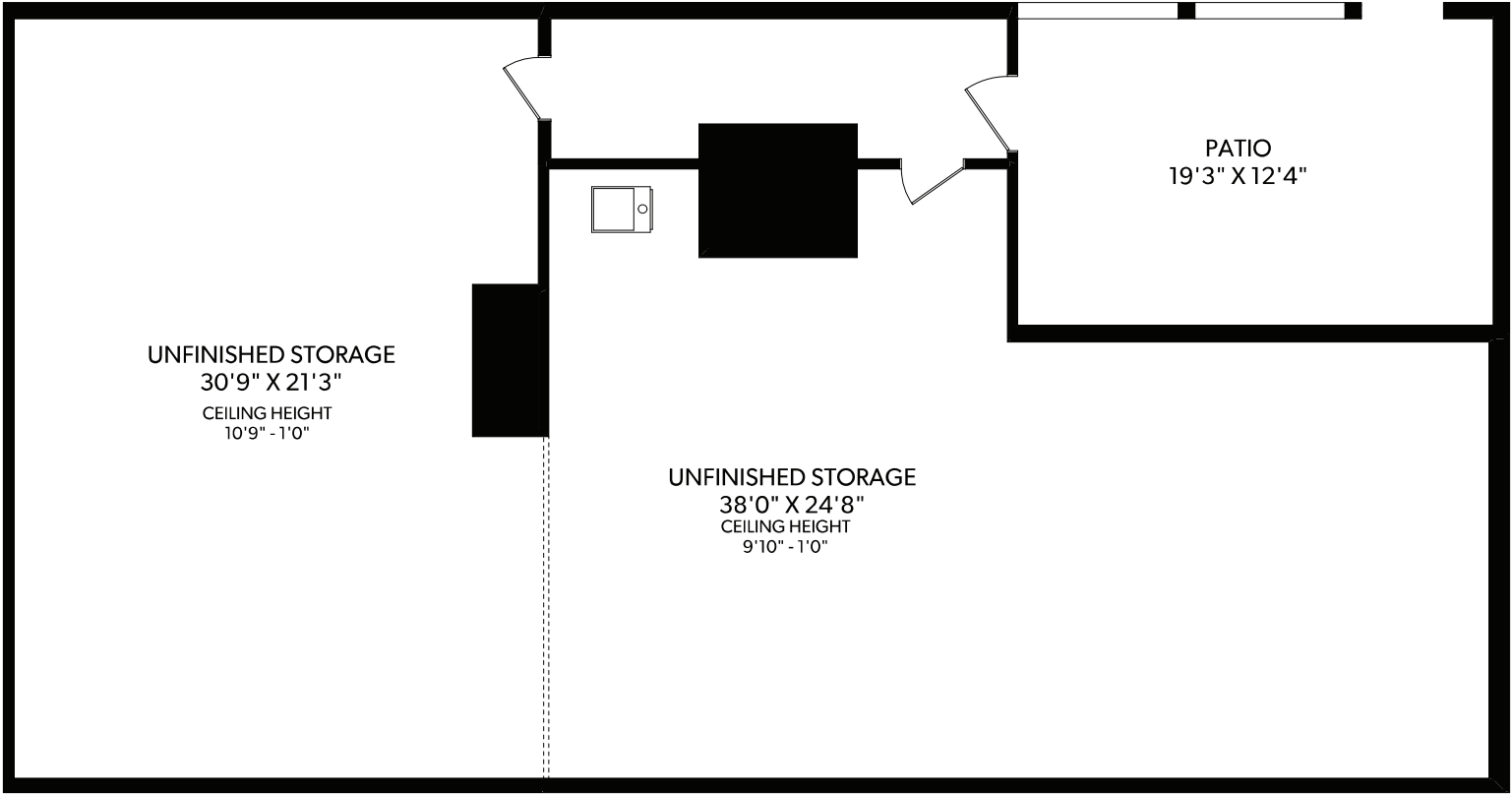
*PERSONAL REAL ESTATE CORPORATION
MEASURED 05/08/2020 BY CLAY OVINCE



RE/MAX
CAMOSUN
Each Office Independently Owned and Operated

All information furnished regarding this property is from sources deemed reliable but no warranty or representation is made to the accuracy thereof. Purchaser to verify measurements if important.

GROUND FLOOR



| FLOOR | FINISHED | UNFINISHED | TOTAL | OTHER AREAS | |
|--------|----------|------------|-------|-------------|-----|
| MAIN | 2390 | 0 | 2390 | GARAGE | 571 |
| LOWER | 1577 | 829 | 2406 | DECK | 824 |
| GROUND | 0 | 1688 | 1688 | BALCONIES | 776 |
| TOTAL | 3967 | 2517 | 6484 | PATIO | 261 |



250-388-6998
ORDERS@REALFOTO.CA

5537 FOREST HILL ROAD
DOCUMENT PREPARED FOR THE EXCLUSIVE USE OF
BLAIR VEENSTRA*

*PERSONAL REAL ESTATE CORPORATION
MEASURED 05/08/2020 BY CLAY OVINGE



RE/MAX
CAMOSUN
Each Office Independently Owned and Operated

All information furnished regarding this property is from sources deemed reliable but no warranty or representation is made to the accuracy thereof. Purchaser to verify measurements if important.