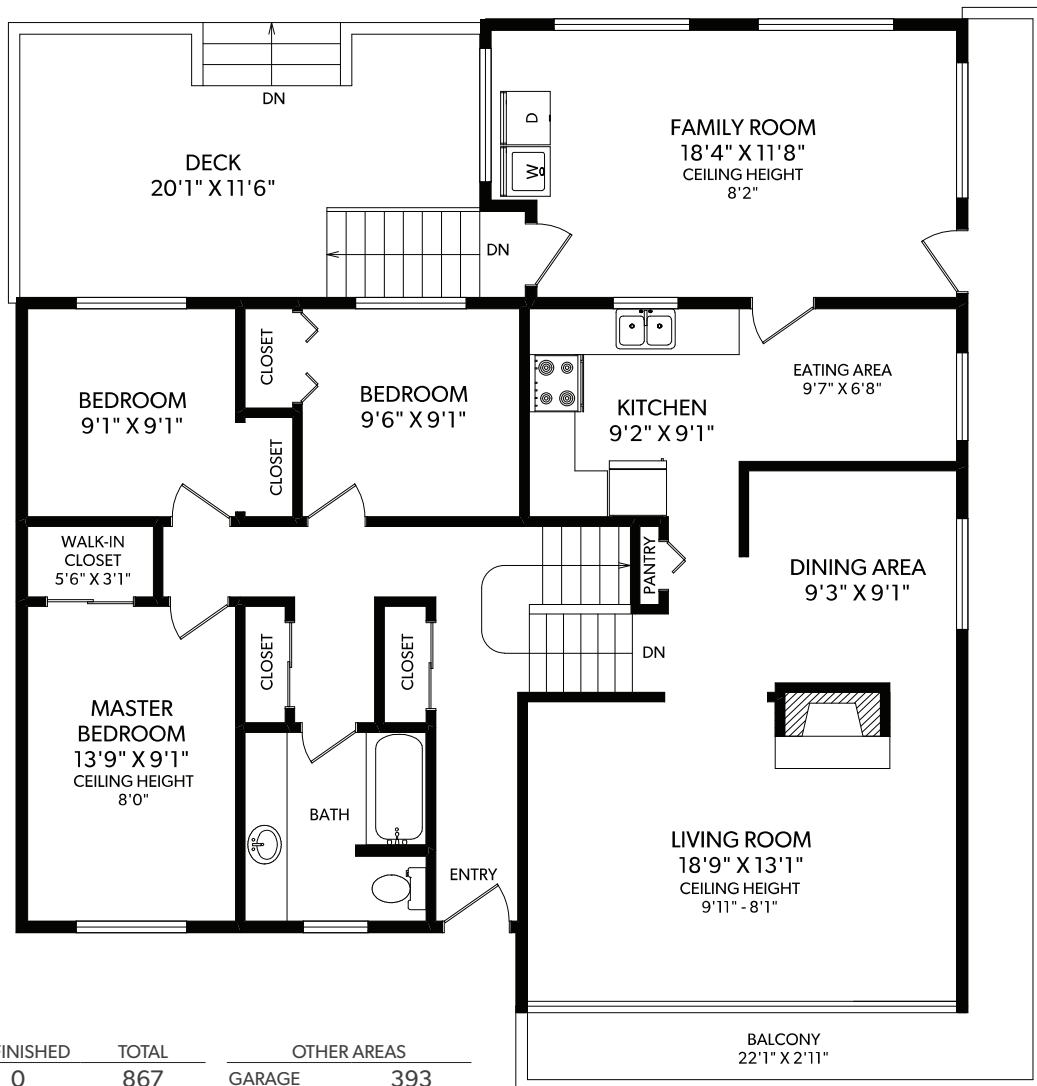


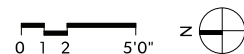
MAIN FLOOR



GROUND FLOOR

FLOOR	FINISHED	UNFINISHED	TOTAL
MAIN	867	0	867
GROUND	608	0	608
LOWER	881	0	881
TOTAL	2356	0	2356

OTHER AREAS	
GARAGE	393
DECK	266
BALCONY	225



721 PORTER ROAD
DOCUMENT PREPARED FOR THE EXCLUSIVE USE OF
HATTER* KING*

250-388-6998
ORDERS@REALFOTO.CA

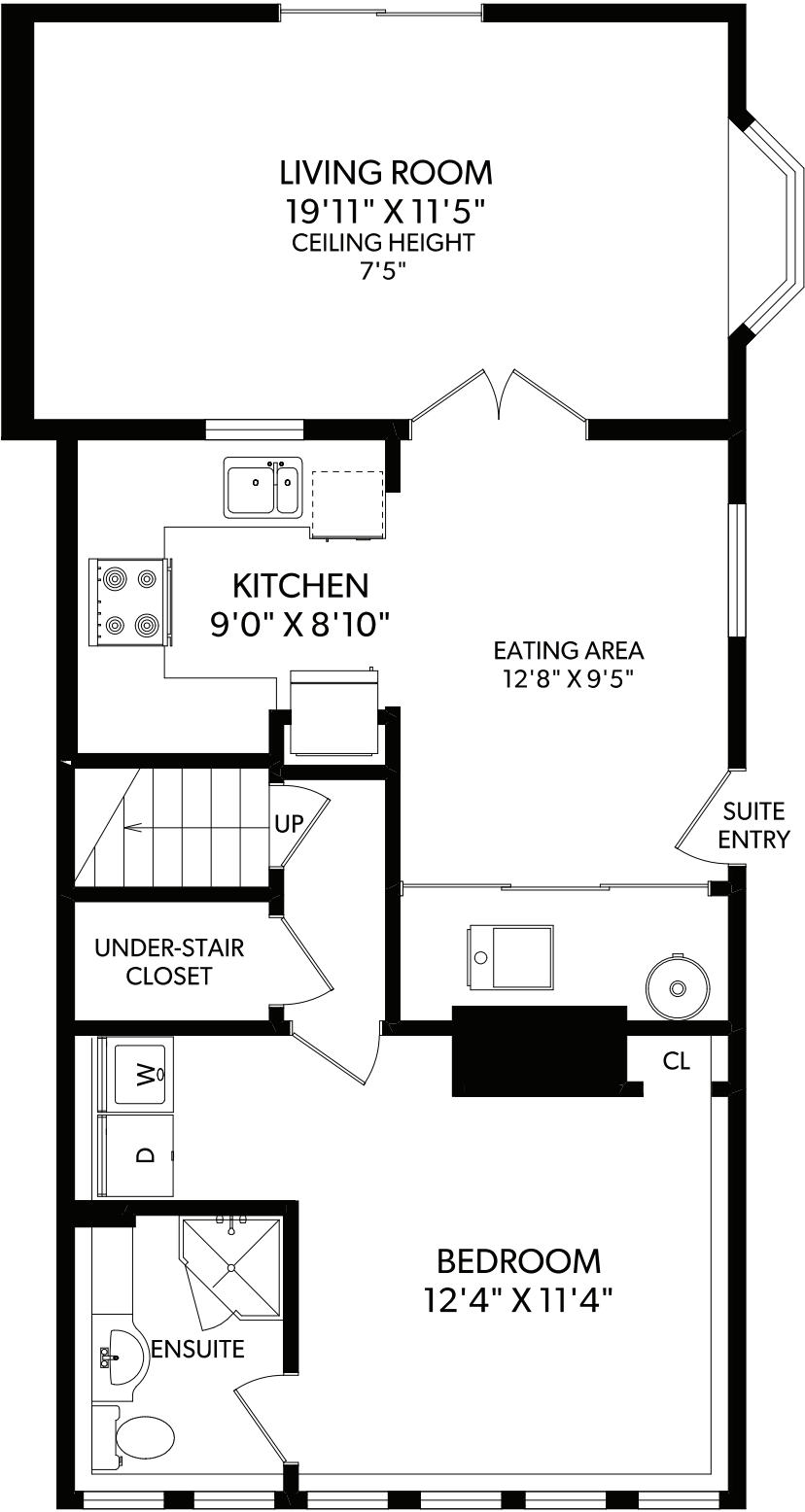
*PERSONAL REAL ESTATE CORPORATION
MEASURED 11/07/2019 BY CLAY OVINCE

All information furnished regarding this property is from sources deemed reliable but no warranty or representation is made to the accuracy thereof. Purchaser to verify measurements if important.



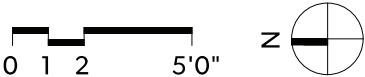
RE/MAX
CAMOSUN
Each Office Independently Owned and Operated

LOWER FLOOR



FLOOR	FINISHED	UNFINISHED	TOTAL
MAIN	867	0	867
GROUND	608	0	608
LOWER	881	0	881
TOTAL	2356	0	2356

OTHER AREAS	
GARAGE	393
DECK	266
BALCONY	225



250-388-6998
ORDERS@REALFOTO.CA

721 PORTER ROAD
DOCUMENT PREPARED FOR THE EXCLUSIVE USE OF
HATTER* KING*

*PERSONAL REAL ESTATE CORPORATION
MEASURED 11/07/2019 BY CLAY OVINCE



RE/MAX
CAMOSUN
Each Office Independently Owned and Operated

All information furnished regarding this property is from sources deemed reliable but no warranty or representation is made to the accuracy thereof. Purchaser to verify measurements if important.